

WHAT'S ON THE SHELF?

A Visual Memory Game



WHAT'S ON THE SHELF?

A Visual Memory Game



ADDRESSES: Helps children improve their visual memory, the skill that requires a student to remember or recall items, numbers, objects, letters, figures, and/or words which have been previously seen.

AGES: Pre-school and older

DIRECTIONS TO PRINT AND ASSEMBLE:

- ☑ **MEMORY PICTURES** – Level 1, Level 2, and Level 3.
 - Print and laminate game pieces for durability.
- ☑ **GAME PIECES** – Level 1, Level 2, and Level 3 Games each have corresponding game pieces.
 - Print and laminate game pieces for durability.
 - Cut out each individual piece.
 - Adhere Velcro to the back of each piece.
- ☑ **GAME BOARDS** –
 - ◆ LEVEL 1 = Boards 1-1, 1-2, 1-3, and 1-4.
 - ◆ LEVEL 2 = Boards 2-1, 2-2, 2-3, 2-4, and 2-5.
 - ◆ LEVEL 3 = Boards 3-1, 3-2, 3-3, 3-4, 3-5, and 3-6.
 - Print and laminate game boards for durability.
 - Adhere the other side of Velcro to each black white square shape.

TO PLAY:

1. Adult selects the level and board to play based on the child's skill level.
2. Child views the Memory Picture for that level. The child is to memorize the location of each item on the shelf.
3. The adult removes the Memory Picture and provides child with game pieces for that level.
4. Based upon their memory of what was previously viewed, the child adheres the game pieces onto the game board.

VARIATIONS:

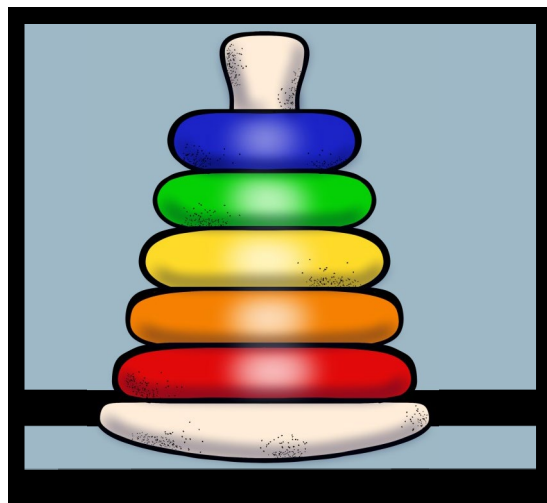
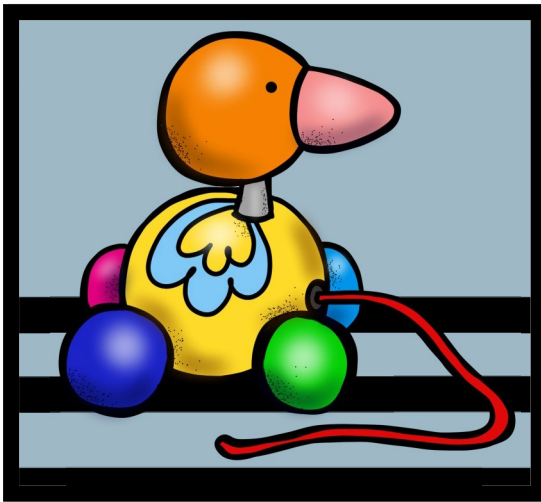
- The child can re-view the location of the items using the Memory Picture page more than once.
- The adult can provide the child with the exact items to be placed on the shelf, or all the items.

WHAT'S ON THE SHELF? LEVEL 1

GAME PIECES

INSTRUCTIONS:

Laminate for durability.
Cut out each individual item below.
Attach Velcro to the back.



WHAT'S ON THE SHELF? LEVEL 1

Study the items on the shelf below.

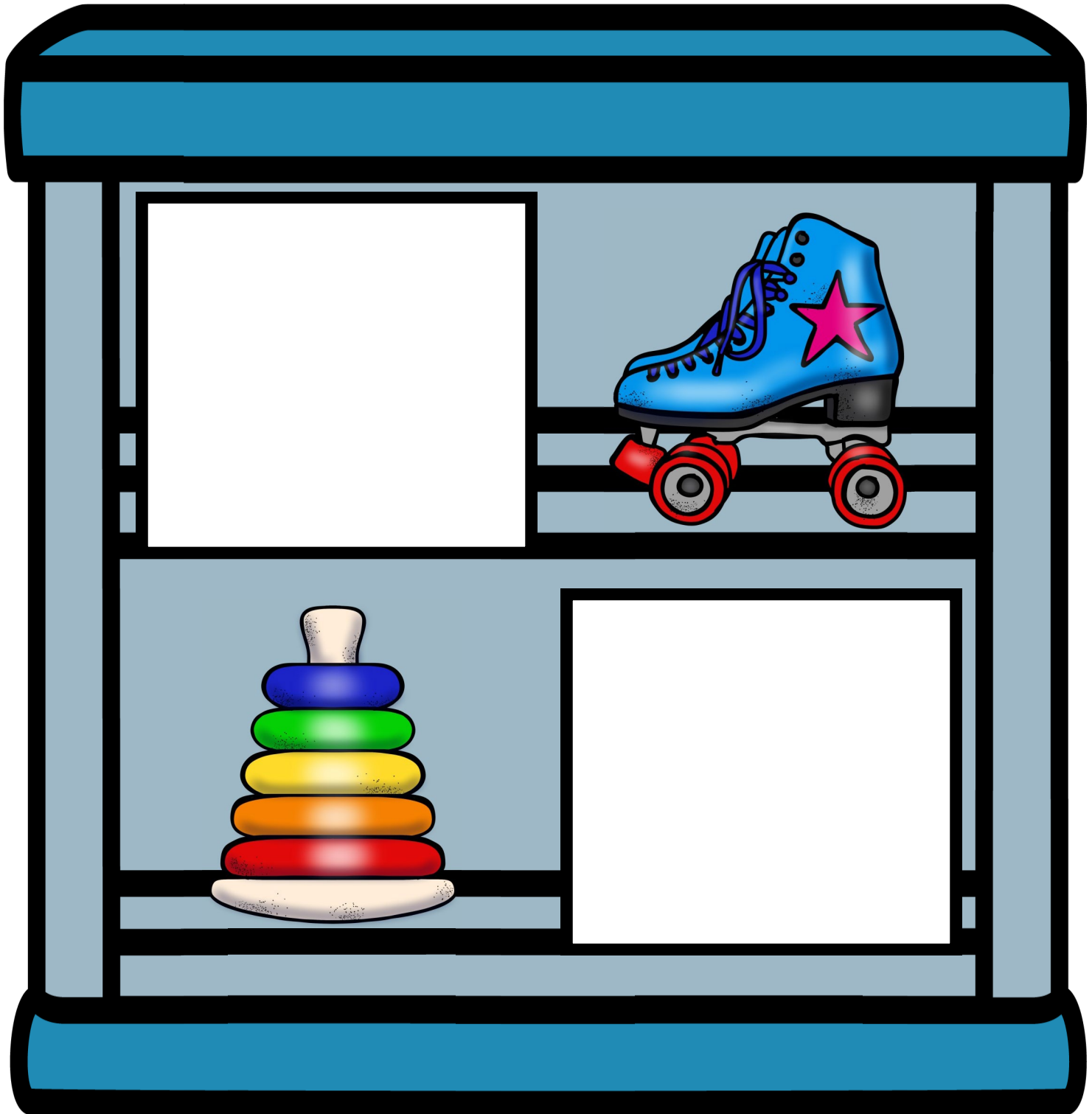
MEMORY PICTURE



WHAT'S ON THE SHELF? LEVEL 1-1

Place the items on the shelf that are missing.

GAME BOARD



WHAT'S ON THE SHELF? LEVEL 1-2

Place the items on the shelf that are missing.

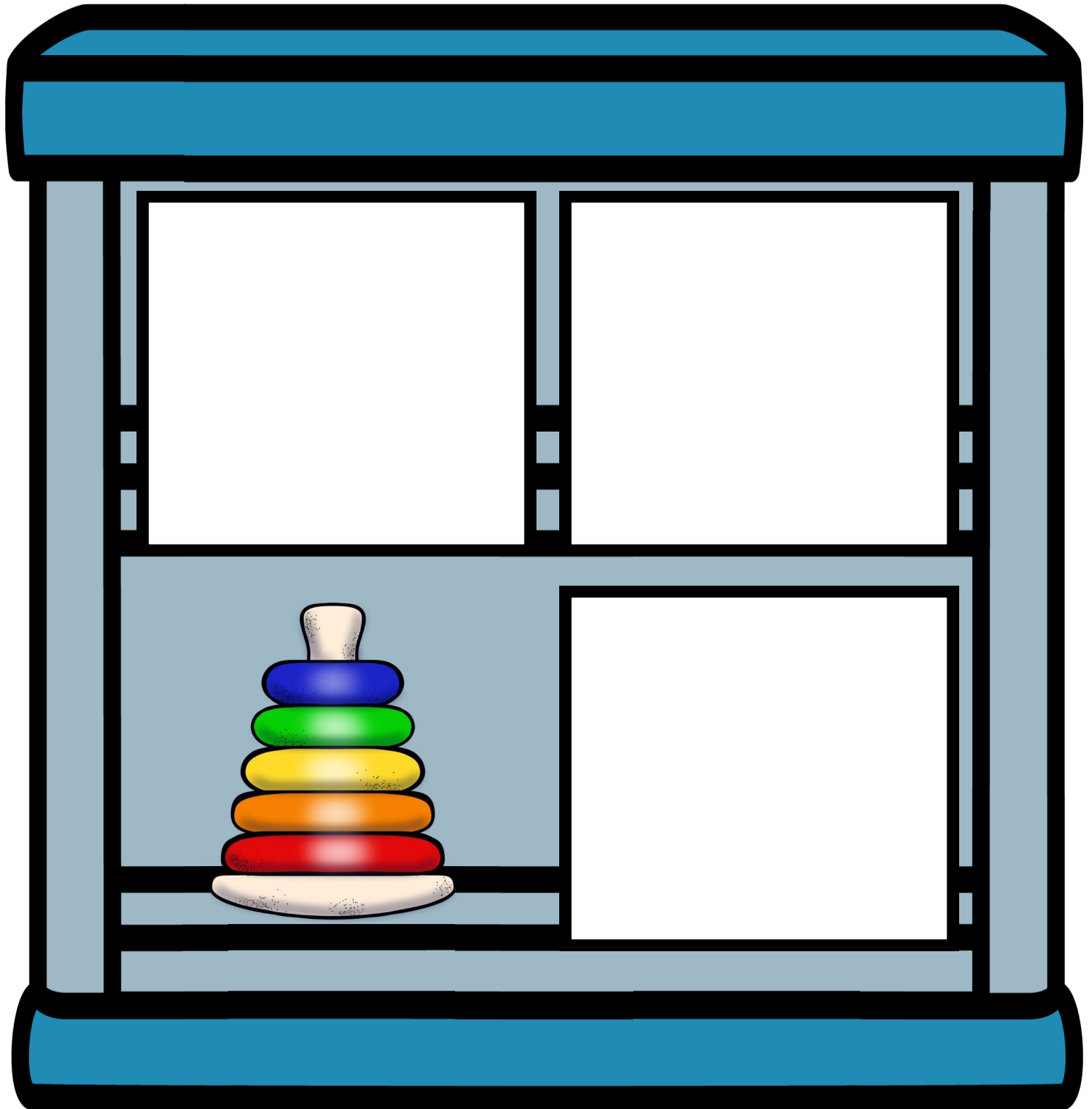
GAME BOARD



WHAT'S ON THE SHELF? LEVEL 1-3

Place the items on the shelf that are missing.

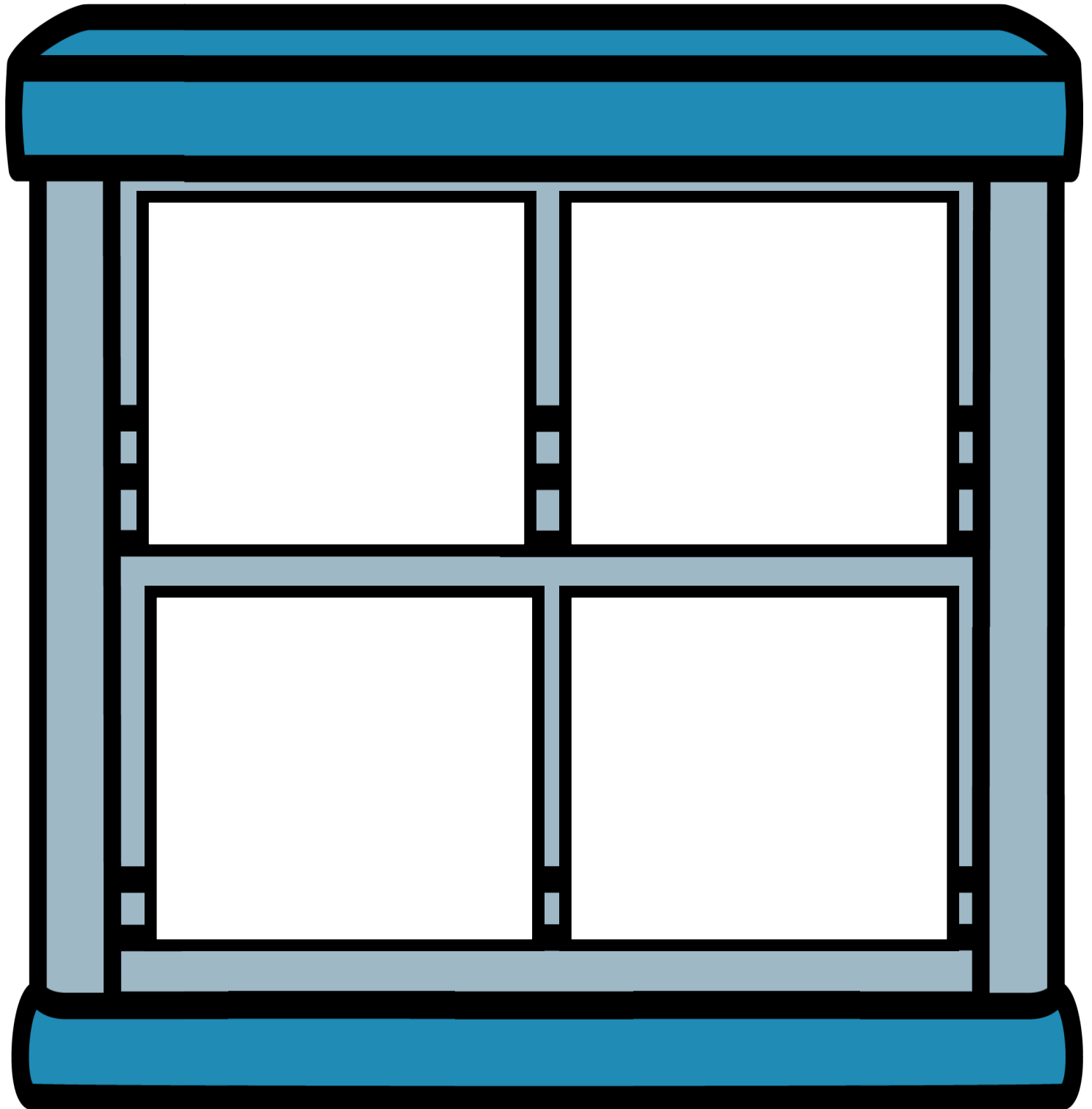
GAME BOARD



WHAT'S ON THE SHELF? LEVEL 1-4

Place the items on the shelf that are missing.

GAME BOARD

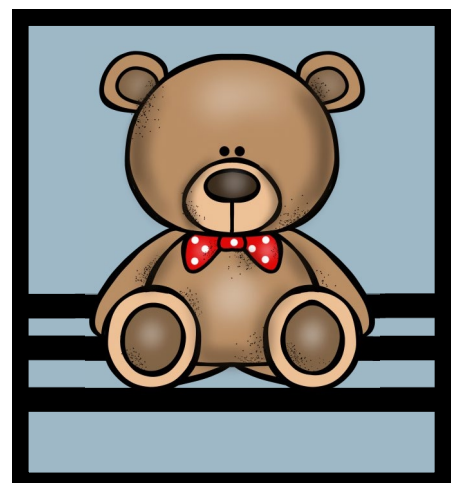
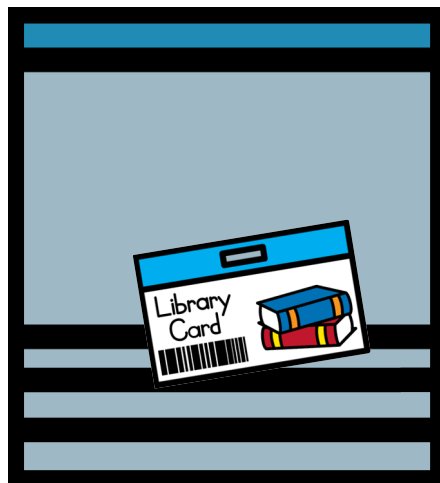
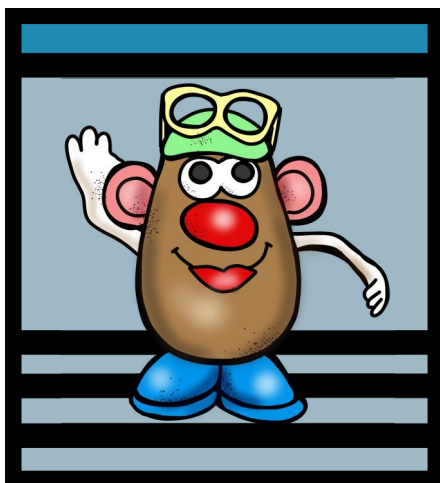
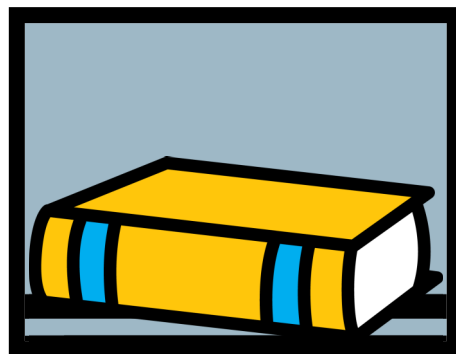


WHAT'S ON THE SHELF? LEVEL 2

GAME PIECES

INSTRUCTIONS:

Laminate for durability.
Cut out each individual item below.
Attach Velcro to the back.



WHAT'S ON THE SHELF? LEVEL 2

Study the items on the shelf below.



WHAT'S ON THE SHELF? LEVEL 2-1

Place the items on the shelf that are missing.

GAME BOARD



WHAT'S ON THE SHELF? LEVEL 2-2

Place the items on the shelf that are missing.

GAME BOARD



WHAT'S ON THE SHELF? LEVEL 2-3

Place the items on the shelf that are missing.

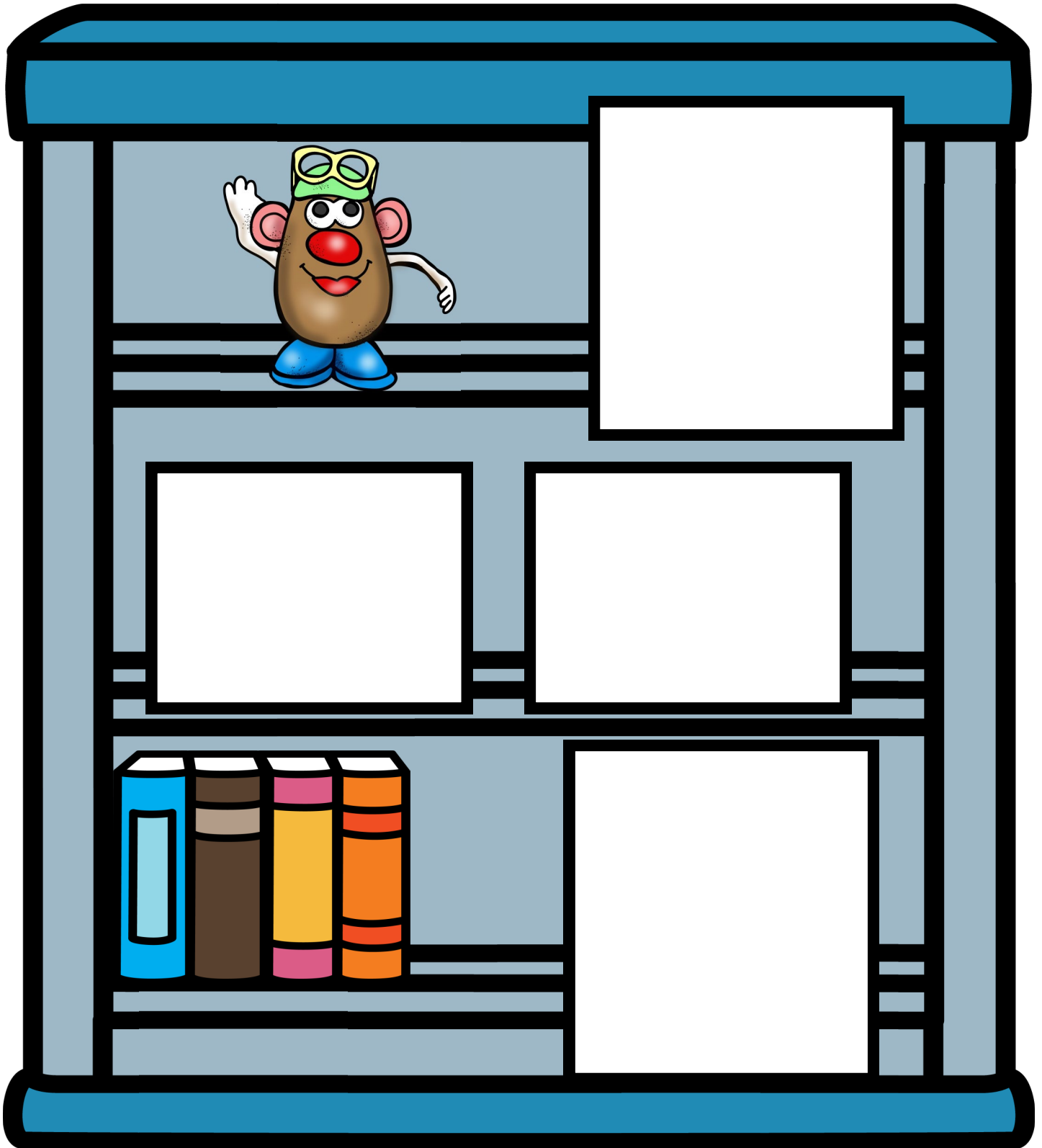
GAME BOARD



WHAT'S ON THE SHELF? LEVEL 2-4

Place the items on the shelf that are missing.

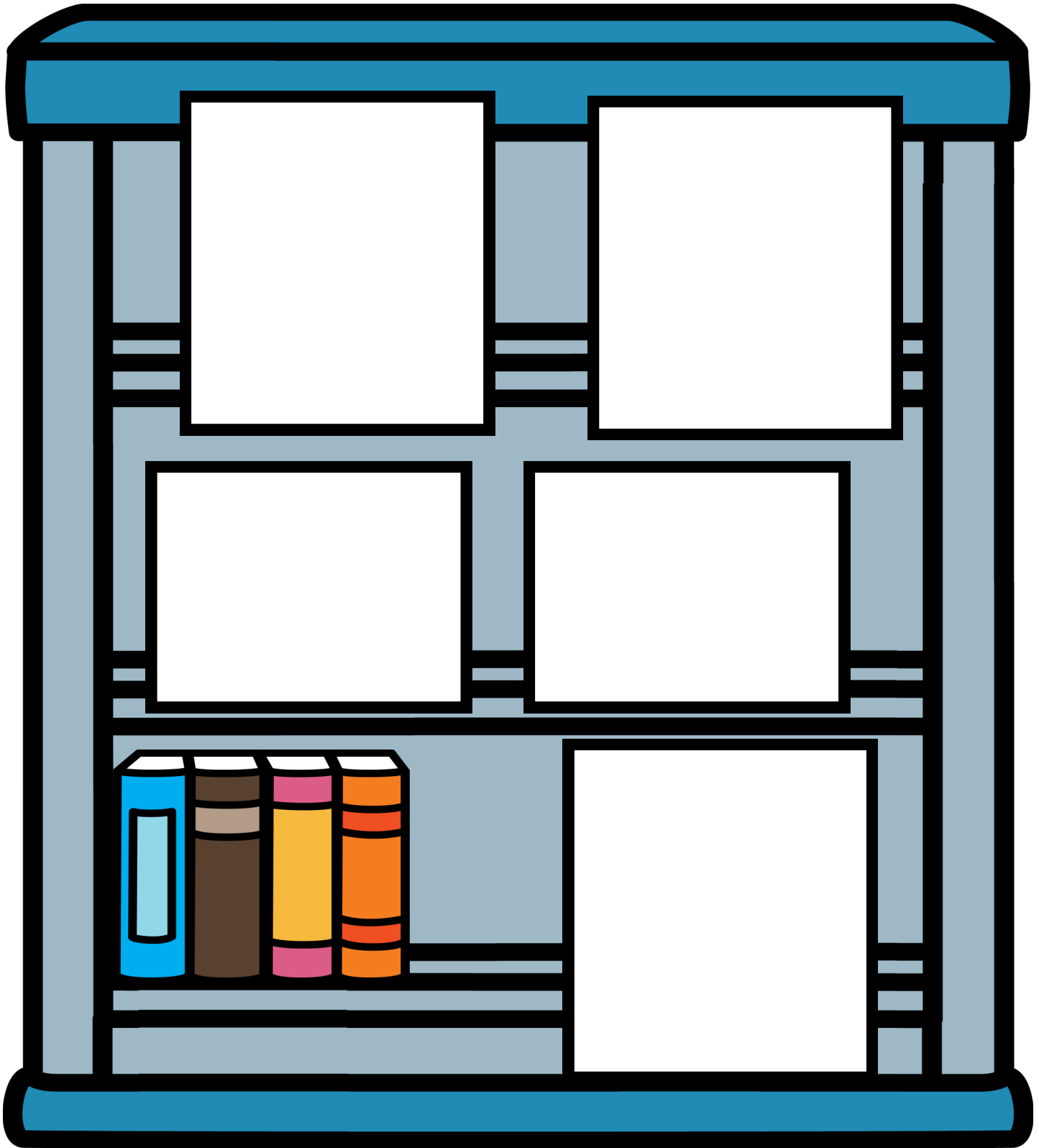
GAME BOARD



WHAT'S ON THE SHELF? LEVEL 2-5

Place the items on the shelf that are missing.

GAME BOARD

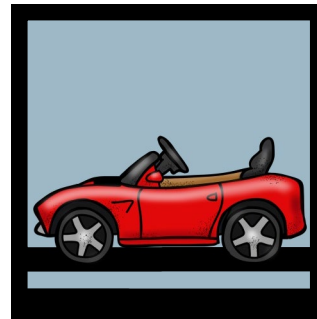
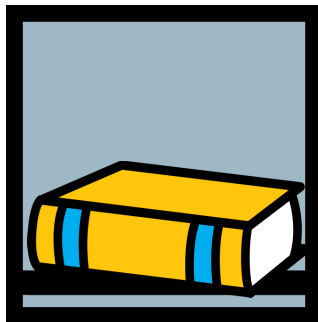


WHAT'S ON THE SHELF? LEVEL 3

GAME PIECES

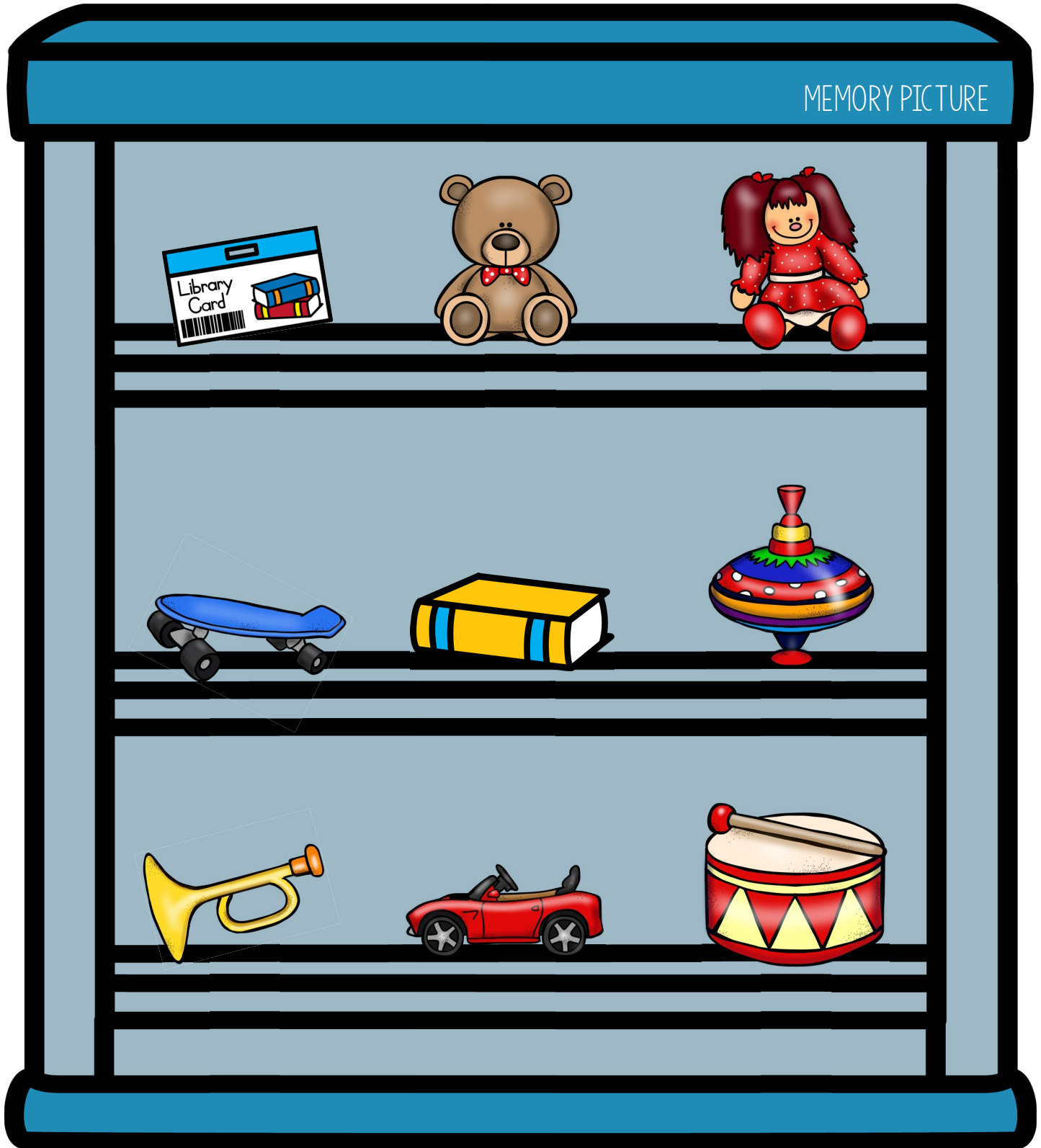
INSTRUCTIONS:

Laminate for durability.
Cut out each individual item below.
Attach Velcro to the back.



WHAT'S ON THE SHELF? LEVEL 3

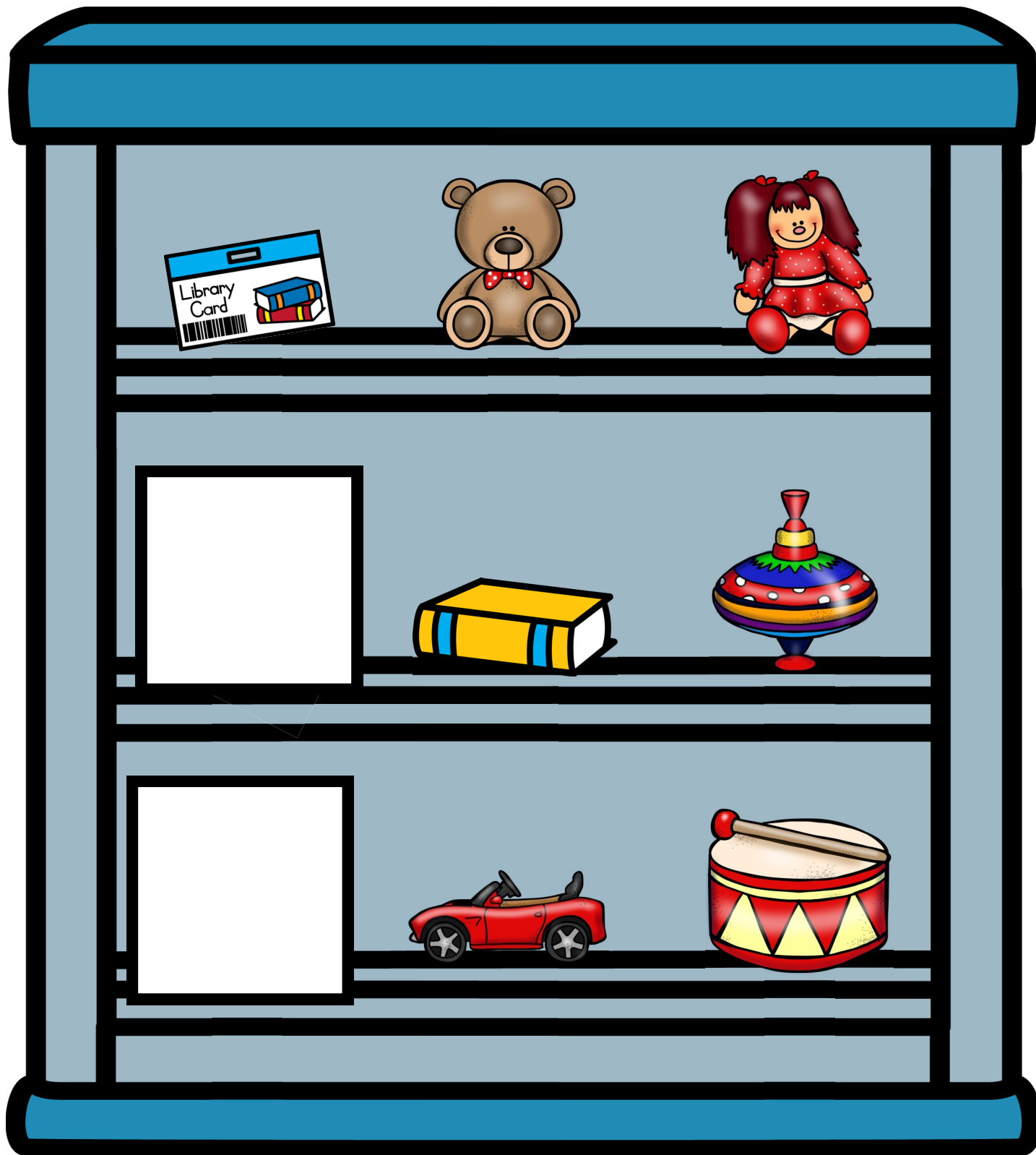
Study the items on the shelf below.



WHAT'S ON THE SHELF? LEVEL 3-1

Place the items on the shelf that are missing.

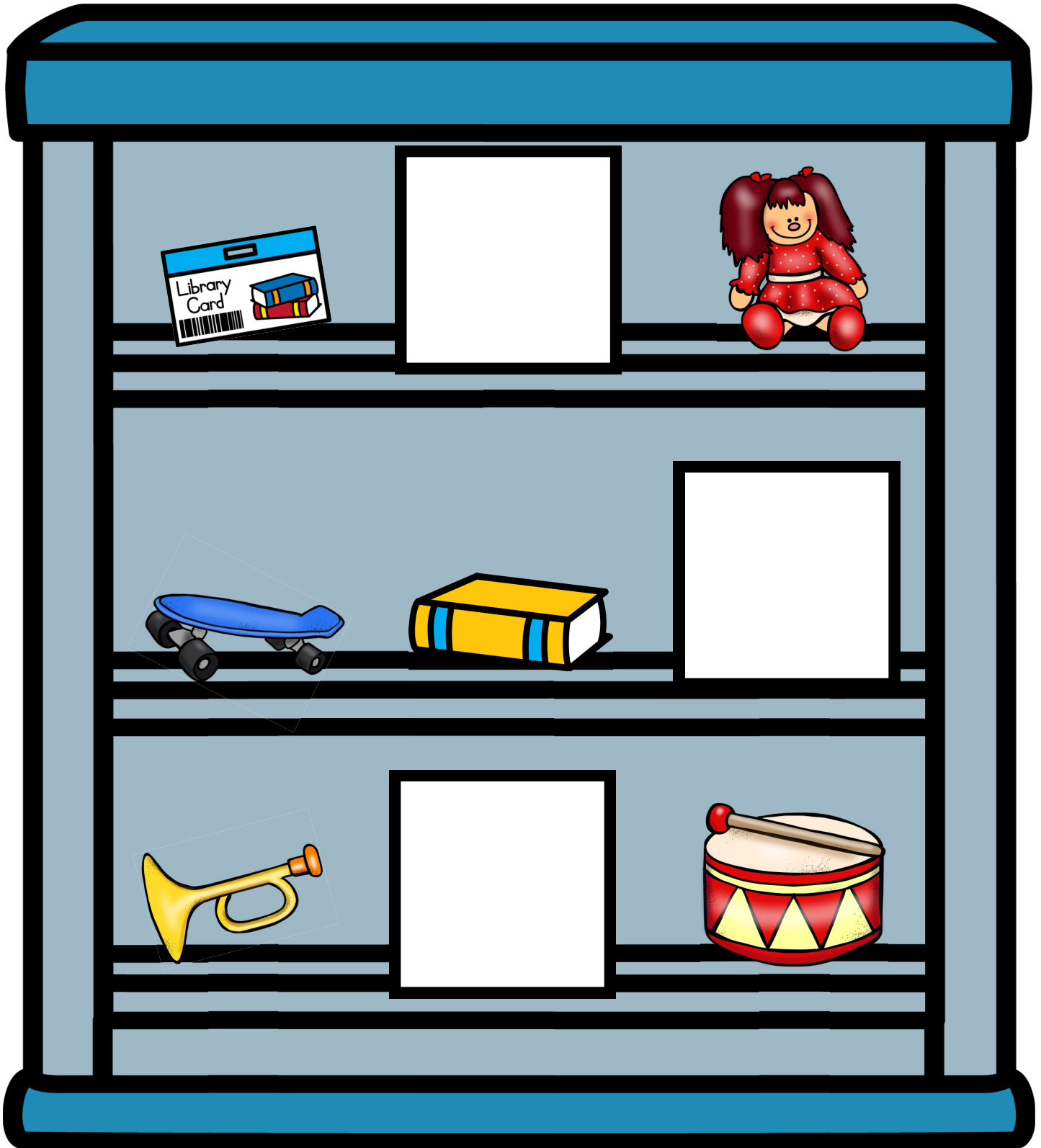
GAME BOARD



WHAT'S ON THE SHELF? LEVEL 3-2

Place the items on the shelf that are missing.

GAME BOARD



WHAT'S ON THE SHELF? LEVEL 3-3

Place the items on the shelf that are missing.

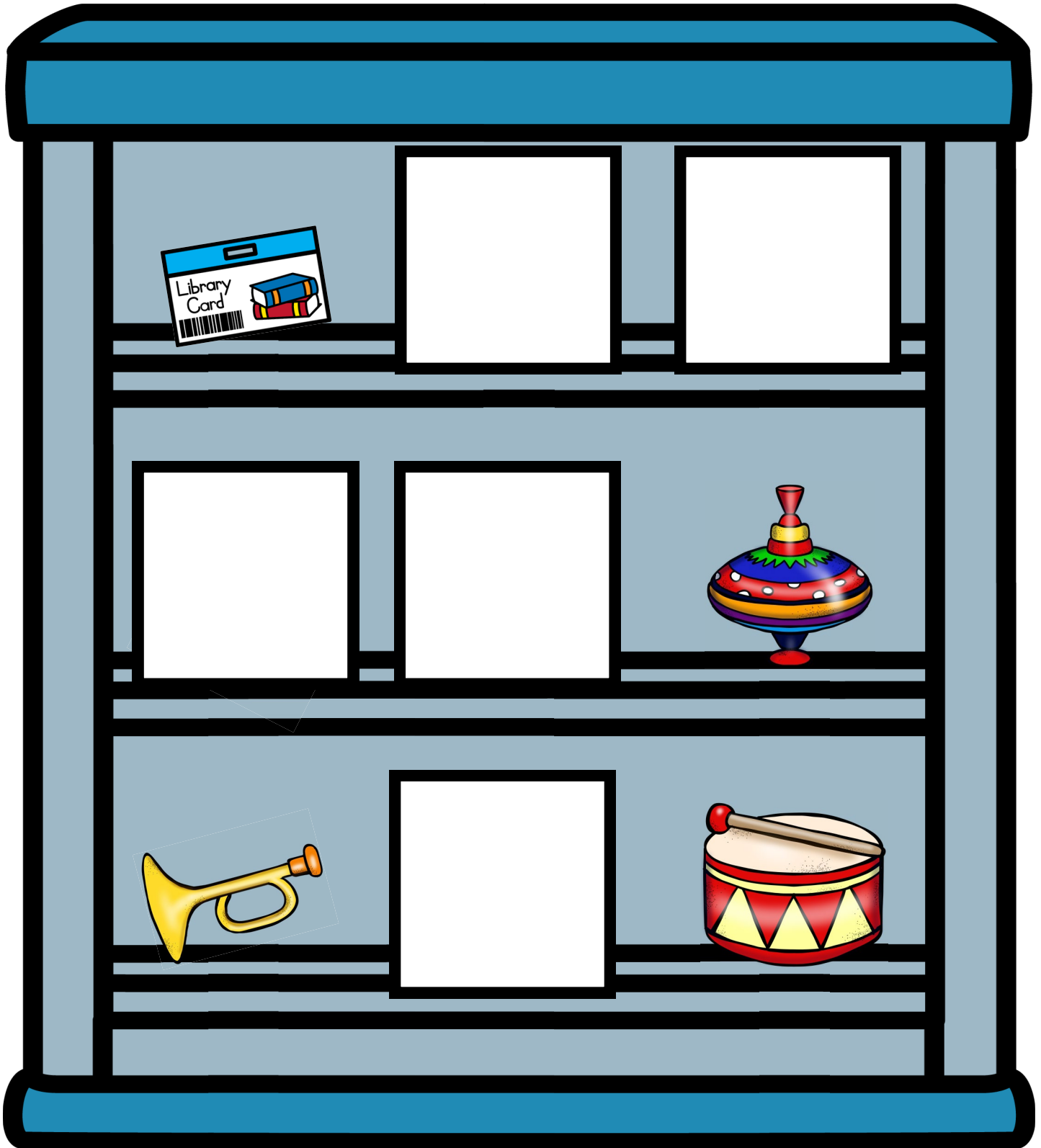
GAME BOARD



WHAT'S ON THE SHELF? LEVEL 3-4

Place the items on the shelf that are missing.

GAME BOARD



WHAT'S ON THE SHELF? LEVEL 3-5

Place the items on the shelf that are missing.

GAME BOARD



WHAT'S ON THE SHELF? LEVEL 3-6

Place the items on the shelf that are missing.

GAME BOARD

