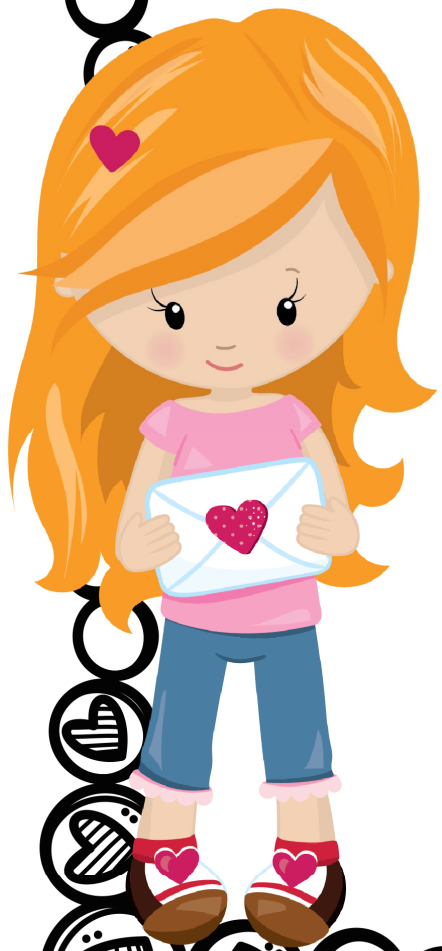




FINE MOTOR

Valentine's
Day

card



www.ToolsToGrowOT.com

Valentine's Day Card

DESCRIPTION

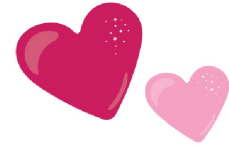
This Valentine's Day card activity is designed to promote development of fine motor, visual motor, folding, printing, following directions, and hand-eye coordination skills.

MATERIALS NEEDED

- 1 Valentine's Day Card template (3 different versions attached)
- Scissors
- Markers/Crayons/Colored Pencils
- Optional: Decorative stickers, glitter, etc.

HOW TO ASSEMBLE

1. Print Valentine's Day Card (attached) on heavy cardstock paper, or cut out and trace onto construction paper.
2. Cut out heart shaped Valentine's Day card.
3. Fold card in half on the dotted lines.
4. Fill out card with name of receiver and sender.
5. Color and decorate your Valentine's Day Card with markers, crayons, glitter glue, or other mediums.
6. Optional: Place completed card in an envelope and give to your Valentine!



Border by Krista Wallden
<http://www.teacherspayteachers.com/Store/Krista-Wallden>

Graphics by Pretty Grafik Designs
<http://www.etsy.com/shop/Prettygrafikdesign>

Copyright ©2016 Tools to Grow®, Inc. All rights reserved.

www.ToolsToGrowOT.com

